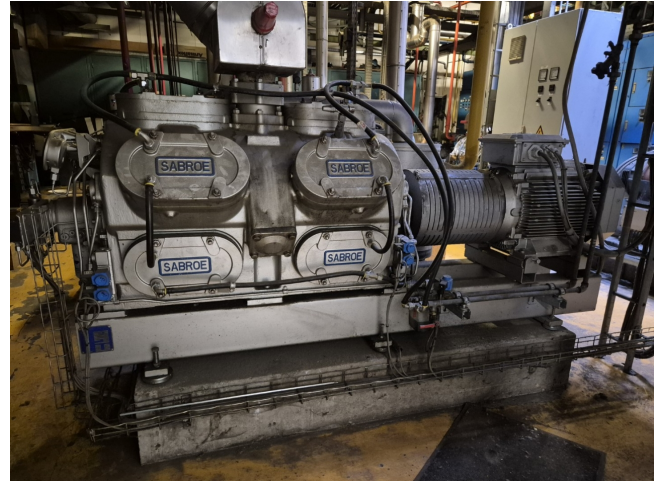


Sabroe SMC 112 L

Specifications

| | |
|--------------------------|--|
| Brand | Sabroe |
| Type | SMC 112 L |
| Refrigerant | NH 3 (ammonia) |
| kW at +10°C/+40°C | 1083,5* |
| kW at 0°C/+40°C | 716,6* |
| kW at -5°C/+40°C | 570,2* |
| kW at -10°C/+40°C | 445,7* |
| Electromotor Specs | 50 Hz - 45 kW - 1480 RPM |
| Unloaded Start | ✓ |
| Capacity Control | ✓ |
| On steel base frame | ✓ |
| Pressure safety switches | ✓ |
| Hp/Lp/Op | |
| Pressure gauges | ✓ |
| Hp/Lp/Op | |
| Oil separator | ✓ |
| Sight Glass | ✓ |
| Solenoid Valve | ✓ |
| m3 / h | 848 |
| Remarks | *Capacity based on a bigger electric motor |
| Stock | 1 |



Description

Used Sabroe SMC 112 L

Used Sabroe SMC 112 L reciprocating compressor on R717 (Ammonia). Complete with a ABB M3BP 225 electric motor - 50 Hz - 45 kW - 1480 RPM, oil separator, pressure and safety switches/gauges. The compressor has a displacement of 848 m³/h. *Capacity based on a bigger electric motor. *Why choose for HOSBV? Were not only the largest used refrigeration specialist in Europe, but also, we deliver all equipment including an extensive test, warranty and industrial cleaning. *Optional we can also perform a new paint job and arrange the logistics.

